

SCHEDULE 2

Aerial Maps for Ngā Tūranga Tūpuna



Decision51 Schedule of SoNTCS Batch Plotting.gws



9.5.5.3 - Schedule of Ngā Tūranga Tūpuna

Christchurch District Boundary (indicative only)

Note: The full extent of the sites are shown for information purposes. The District Plan provisions only apply to the portion of the site on the landward side of Mean High Water Springs







X: 2486557
Y: 5739953

X: 2486501
Y: 5738785

X: 2486482
Y: 5738432

X: 2486497
Y: 5737923

X: 2486559
Y: 5737785

X: 2488935
Y: 5736076

X: 2488627
Y: 5735129

X: 2492175
Y: 5735898



9.5.5.3 - Schedule of Ngā Tūranga Tūpuna

Christchurch District Boundary (indicative only)

Note: The full extent of the sites are shown for information purposes. The District Plan provisions only apply to the portion of the site on the landward side of Mean High Water Springs



Ngā Tūranga Tūpuna Aerial Map Site ID44 Raekura ki Matuku Takotako

Notes: 1. Additional sites are shown for context purposes only. Refer to the specific aerial map for the detail of each site.

Decision31 Schedule of Sites Batch Plotting gws



Decision51 Schedule of SoNTCS Batch Plotting.gws



9.5.5.3 - Schedule of Ngā Tūranga Tūpuna

Christchurch District Boundary (indicative only)

Note: The full extent of the sites are shown for information purposes. The District Plan provisions only apply to the portion of the site on the landward side of Mean High Water Springs



Ngā Tūranga Tūpuna Aerial Map

Site ID46 Ōhinetahi Pā

Notes: 1. Additional sites are shown for context purposes only. Refer to the specific aerial map for the detail of each site.



Decision51 Schedule of SoNTCS Batch Plotting gws



9.5.5.3 - Schedule of Ngā Tūranga Tūpuna

Christchurch District Boundary (indicative only)

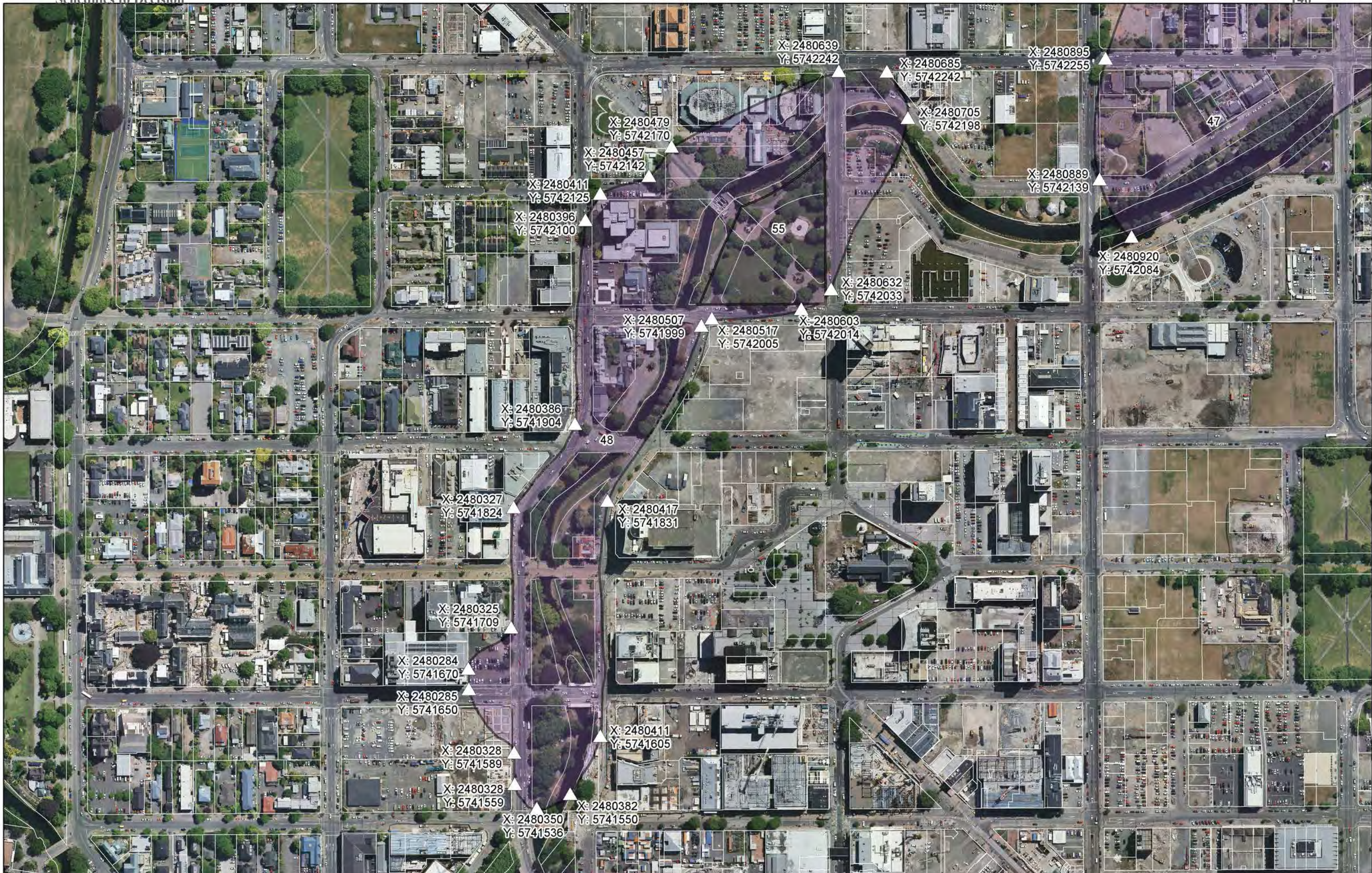
Note: The full extent of the sites are shown for information purposes. The District Plan provisions only apply to the portion of the site on the landward side of Mean High Water Springs



Ngā Tūranga Tūpuna Aerial Map

Site ID47 Tautahi Pā

Notes: 1. Additional sites are shown for context purposes only. Refer to the specific aerial map for the detail of each site.



Decision51 Schedule of SoNTCS Batch Plotting.gws



9.5.5.3 - Schedule of Ngā Tūranga Tūpuna

Christchurch District Boundary (indicative only)

Note: The full extent of the sites are shown for information purposes. The District Plan provisions only apply to the portion of the site on the landward side of Mean High Water Springs





X: 2486868
Y: 5753208

Decision51 Schedule of SoNTCS Batch Plotting gws



9.5.5.3 - Schedule of Ngā Tūranga Tūpuna

Christchurch District Boundary (indicative only)

Note: The full extent of the sites are shown for information purposes. The District Plan provisions only apply to the portion of the site on the landward side of Mean High Water Springs



Ngā Tūranga Tūpuna Aerial Map

Site ID49 Te Riu o Te Aika Kawa

Notes: 1. Additional sites are shown for context purposes only. Refer to the specific aerial map for the detail of each site.





9.5.5.3 - Schedule of Ngā Tūranga Tūpuna
Christchurch District Boundary (indicative only)
Note: The full extent of the sites are shown for information purposes. The District Plan provisions only apply to the portion of the site on the landward side of Mean High Water Springs



Ngā Tūranga Tūpuna Aerial Map
Site ID50 Ōruapaeroa - Southern Enlargement

Notes: 1. Additional sites are shown for context purposes only. Refer to the specific aerial map for the detail of each site.



Decision51 Schedule of Ngā Tūranga Tūpuna Batch Plotting.gws



9.5.5.3 - Schedule of Ngā Tūranga Tūpuna

Christchurch District Boundary (indicative only)

Note: The full extent of the sites are shown for information purposes. The District Plan provisions only apply to the portion of the site on the landward side of Mean High Water Springs



Ngā Tūranga Tūpuna Aerial Map

Site ID50 Ōruapaeroa

Notes: 1. Additional sites are shown for context purposes only. Refer to the specific aerial map for the detail of each site.



Decision 51 Schedule of SOTCS Batch Plotting.gws



9.5.5.3 - Schedule of Ngā Tūranga Tūpuna

Christchurch District Boundary (indicative only)

Note: The full extent of the sites are shown for information purposes. The District Plan provisions only apply to the portion of the site on the landward side of Mean High Water Springs



Ngā Tūranga Tūpuna Aerial Map

Site ID51 Te Oranga / Waikākāriki

Notes: 1. Additional sites are shown for context purposes only. Refer to the specific aerial map for the detail of each site.



Decision51 Schedule of SoNT CS Batch Plotting.gws



9.5.5.3 - Schedule of Ngā Tūranga Tūpuna

Christchurch District Boundary (indicative only)

Note: The full extent of the sites are shown for information purposes. The District Plan provisions only apply to the portion of the site on the landward side of Mean High Water Springs



Ngā Tūranga Tūpuna Aerial Map

Site ID52 Te Kai a te Karoro

Notes: 1. Additional sites are shown for context purposes only. Refer to the specific aerial map for the detail of each site.



Decision51 Schedule of SoNTCS Batch Plotting.gws



9.5.5.3 - Schedule of Ngā Tūranga Tūpuna

Christchurch District Boundary (indicative only)

Note: The full extent of the sites are shown for information purposes. The District Plan provisions only apply to the portion of the site on the landward side of Mean High Water Springs



Ngā Tūranga Tūpuna Aerial Map
Site ID53 Te Karoro Karoro

Notes: 1. Additional sites are shown for context purposes only. Refer to the specific aerial map for the detail of each site.



Decision51 Schedule of SoNTCS Batch Plotting.gws



9.5.5.3 - Schedule of Ngā Tūranga Tūpuna

Christchurch District Boundary (indicative only)

Note: The full extent of the sites are shown for information purposes. The District Plan provisions only apply to the portion of the site on the landward side of Mean High Water Springs



Ngā Tūranga Tūpuna Aerial Map

Site ID54 Ti Kouka Fishing Marker

Notes: 1. Additional sites are shown for context purposes only. Refer to the specific aerial map for the detail of each site.





Decision51 Schedule of SoNTCS Batch Plotting.gws



9.5.5.3 - Schedule of Ngā Tūranga Tūpuna

Christchurch District Boundary (indicative only)

Note: The full extent of the sites are shown for information purposes. The District Plan provisions only apply to the portion of the site on the landward side of Mean High Water Springs

Ngā Tūranga Tūpuna Aerial Map
Site ID55 Market Square

Notes: 1. Additional sites are shown for context purposes only. Refer to the specific aerial map for the detail of each site.



Decision51 Schedule of SoNTCS Batch Plotting.gws



9.5.5.3 - Schedule of Ngā Tūranga Tūpuna

Christchurch District Boundary (indicative only)

Note: The full extent of the sites are shown for information purposes. The District Plan provisions only apply to the portion of the site on the landward side of Mean High Water Springs



Ngā Tūranga Tūpuna Aerial Map Site ID56 Waipapa (Little Hagley Park)

Notes: 1. Additional sites are shown for context purposes only. Refer to the specific aerial map for the detail of each site.



Decision51 Schedule of SoNTCS Batch Plotting gws



9.5.5.3 - Schedule of Ngā Tūranga Tūpuna

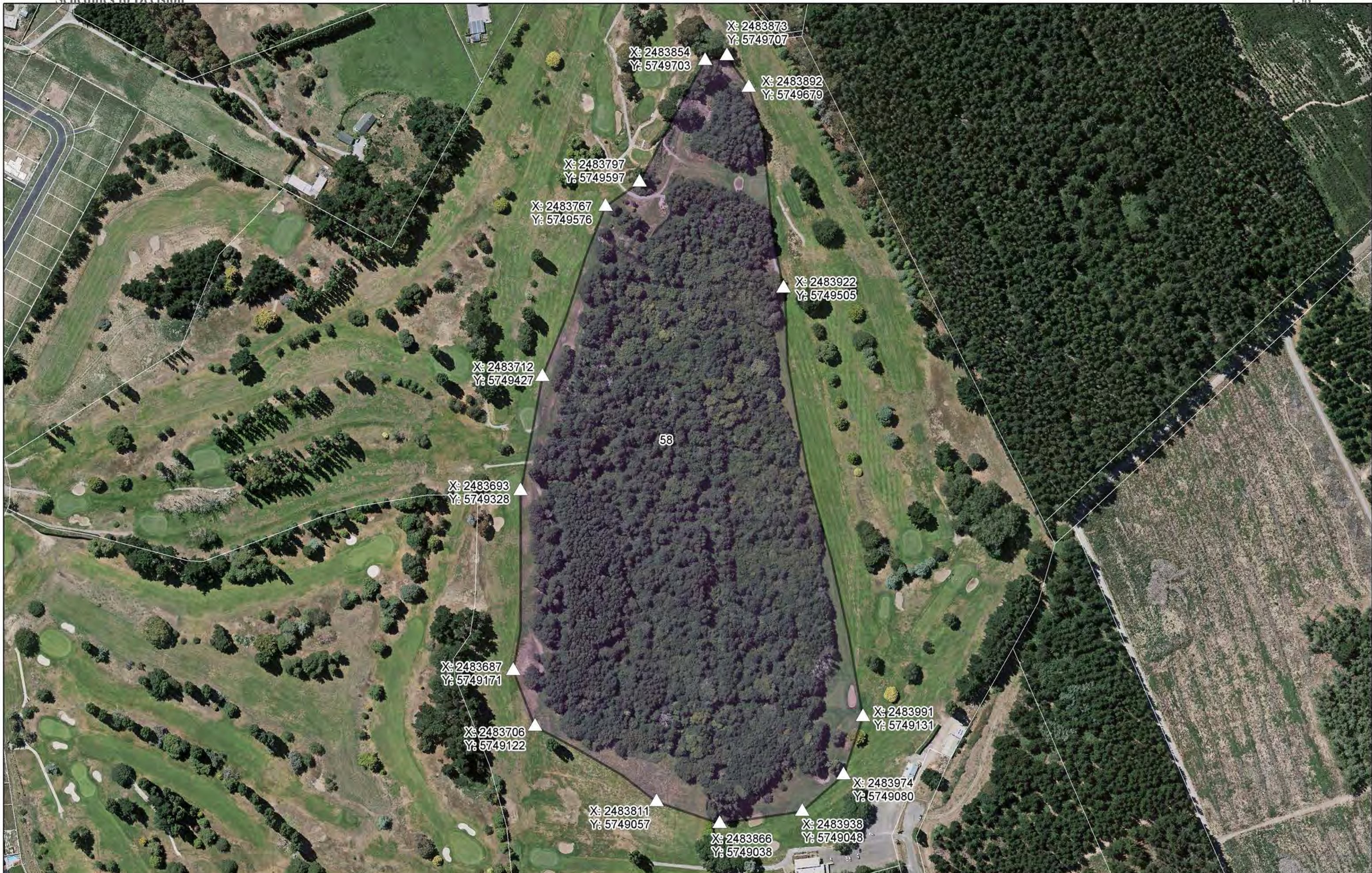
Christchurch District Boundary (indicative only)

Note: The full extent of the sites are shown for information purposes. The District Plan provisions only apply to the portion of the site on the landward side of Mean High Water Springs



Ngā Tūranga Tūpuna Aerial Map
Site ID57 Pūtarikamotu

Notes: 1. Additional sites are shown for context purposes only. Refer to the specific aerial map for the detail of each site.



Decision51 Schedule of SoNTCS Batch Plotting.gws



9.5.5.3 - Schedule of Ngā Tūranga Tūpuna

Christchurch District Boundary (indicative only)

Note: The full extent of the sites are shown for information purposes. The District Plan provisions only apply to the portion of the site on the landward side of Mean High Water Springs



Ngā Tūranga Tūpuna Aerial Map Site ID58 Waitākiri

Notes: 1. Additional sites are shown for context purposes only. Refer to the specific aerial map for the detail of each site.



Decision51 Schedule of SoNTCS Batch Plotting.gws



9.5.5.3 - Schedule of Ngā Tūranga Tūpuna
Christchurch District Boundary (indicative only)
Note: The full extent of the sites are shown for information purposes. The District Plan provisions only apply to the portion of the site on the landward side of Mean High Water Springs



Ngā Tūranga Tūpuna Aerial Map

Site ID59 Ōtamahua

Notes: 1. Additional sites are shown for context purposes only. Refer to the specific aerial map for the detail of each site.



Decision51 Schedule of SoNTCS Batch Plotting.gws



9.5.5.3 - Schedule of Ngā Tūranga Tūpuna

Christchurch District Boundary (indicative only)

Note: The full extent of the sites are shown for information purposes. The District Plan provisions only apply to the portion of the site on the landward side of Mean High Water Springs



Ngā Tūranga Tūpuna Aerial Map

Site ID62 Ōkeina / Kawatea

Notes: 1. Additional sites are shown for context purposes only. Refer to the specific aerial map for the detail of each site.



Decision31 Schedule of SoNTCS Batch Plotting gws



9.5.5.3 - Schedule of Ngā Tūranga Tūpuna

Christchurch District Boundary (indicative only)

Note: The full extent of the sites are shown for information purposes. The District Plan provisions only apply to the portion of the site on the landward side of Mean High Water Springs



Ngā Tūranga Tūpuna Aerial Map

Site ID65 Ōhinehou

Notes: 1. Additional sites are shown for context purposes only. Refer to the specific aerial map for the detail of each site.



Decision51 Schedule of SoNTCS Batch Plotting.gws



9.5.5.3 - Schedule of Ngā Tūranga Tūpuna

Christchurch District Boundary (indicative only)

Note: The full extent of the sites are shown for information purposes. The District Plan provisions only apply to the portion of the site on the landward side of Mean High Water Springs



Ngā Tūranga Tūpuna Aerial Map

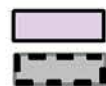
Site ID67 Aua (King Billy Island)

Notes: 1. Additional sites are shown for context purposes only. Refer to the specific aerial map for the detail of each site.





Decision51 Schedule of SoNTCS Batch Plotting.gws



9.5.5.3 - Schedule of Ngā Tūranga Tūpuna

Christchurch District Boundary (indicative only)

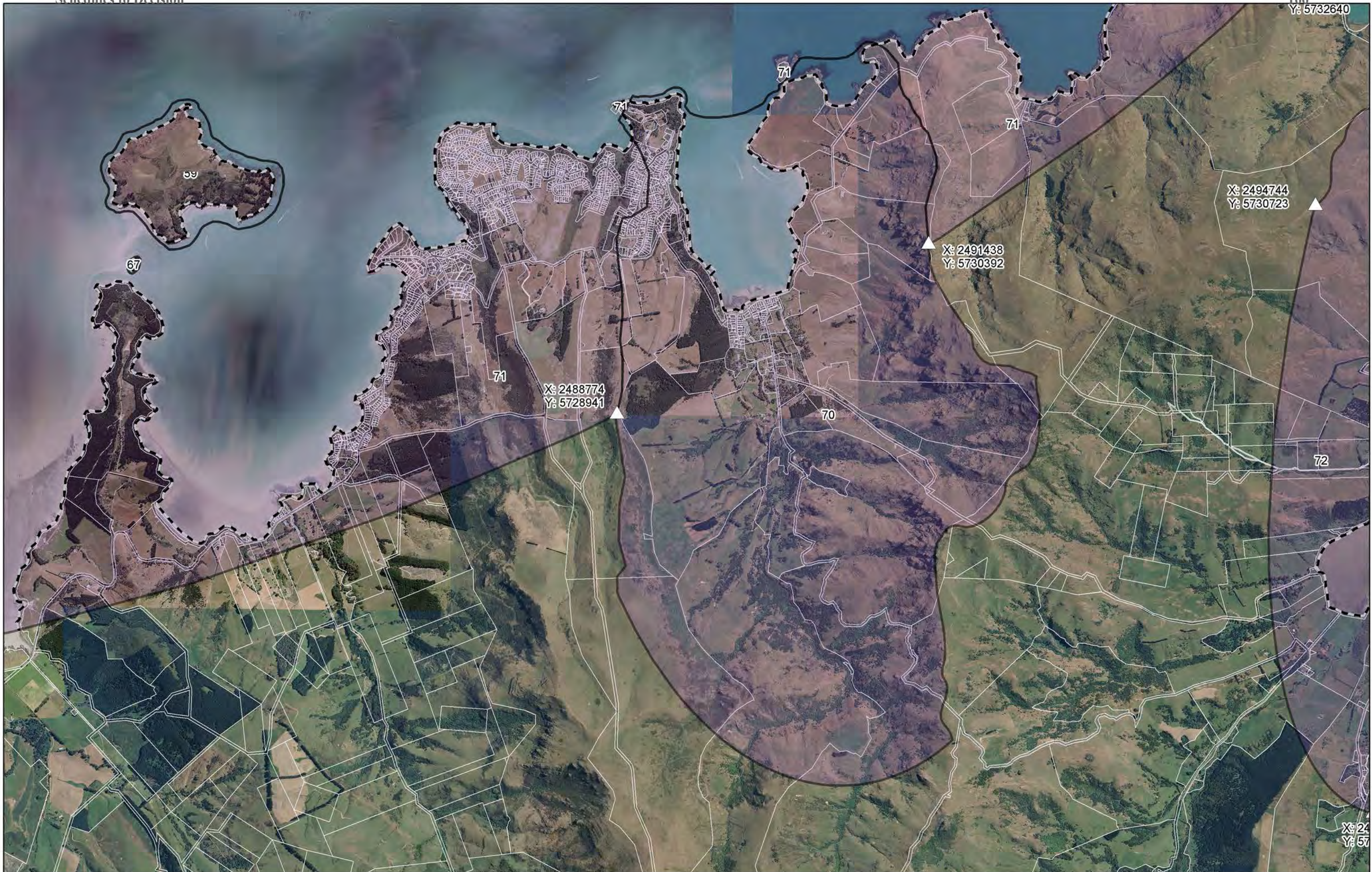
Note: The full extent of the sites are shown for information purposes. The District Plan provisions only apply to the portion of the site on the landward side of Mean High Water Springs



Ngā Tūranga Tūpuna Aerial Map

Site ID69 Pukerauaruhe (Brownes Island)

Notes: 1. Additional sites are shown for context purposes only. Refer to the specific aerial map for the detail of each site.



Decision51 Schedule of SoNTCS Batch Plotting.gws



9.5.5.3 - Schedule of Ngā Tūranga Tūpuna

Christchurch District Boundary (indicative only)

Note: The full extent of the sites are shown for information purposes. The District Plan provisions only apply to the portion of the site on the landward side of Mean High Water Springs



Ngā Tūranga Tūpuna Aerial Map

Site ID70 Purau

Notes: 1. Additional sites are shown for context purposes only. Refer to the specific aerial map for the detail of each site.





9.5.5.3 - Schedule of Ngā Tūranga Tūpuna
Christchurch District Boundary (indicative only)
Note: The full extent of the sites are shown for information purposes. The District Plan provisions only apply to the portion of the site on the landward side of Mean High Water Springs

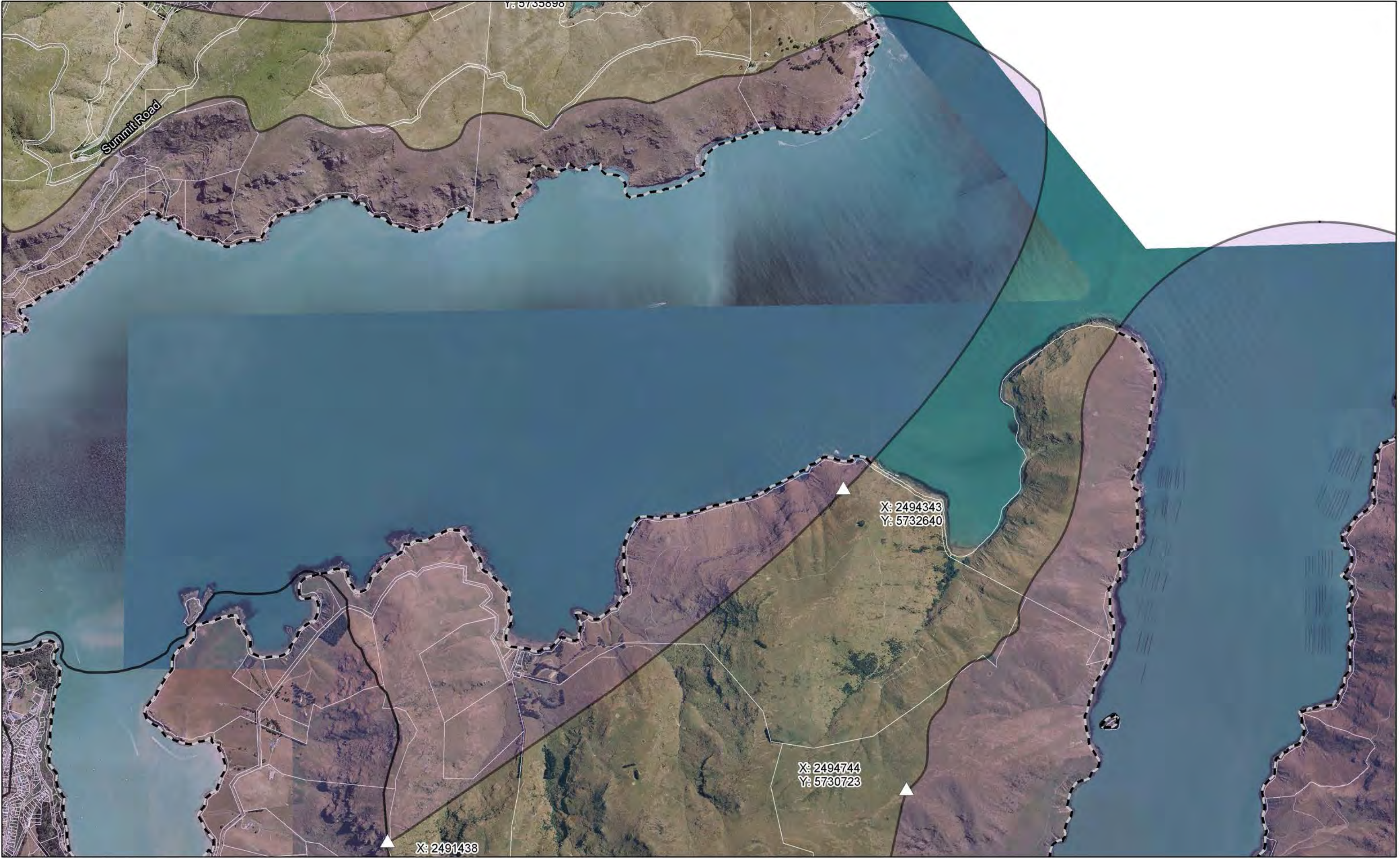


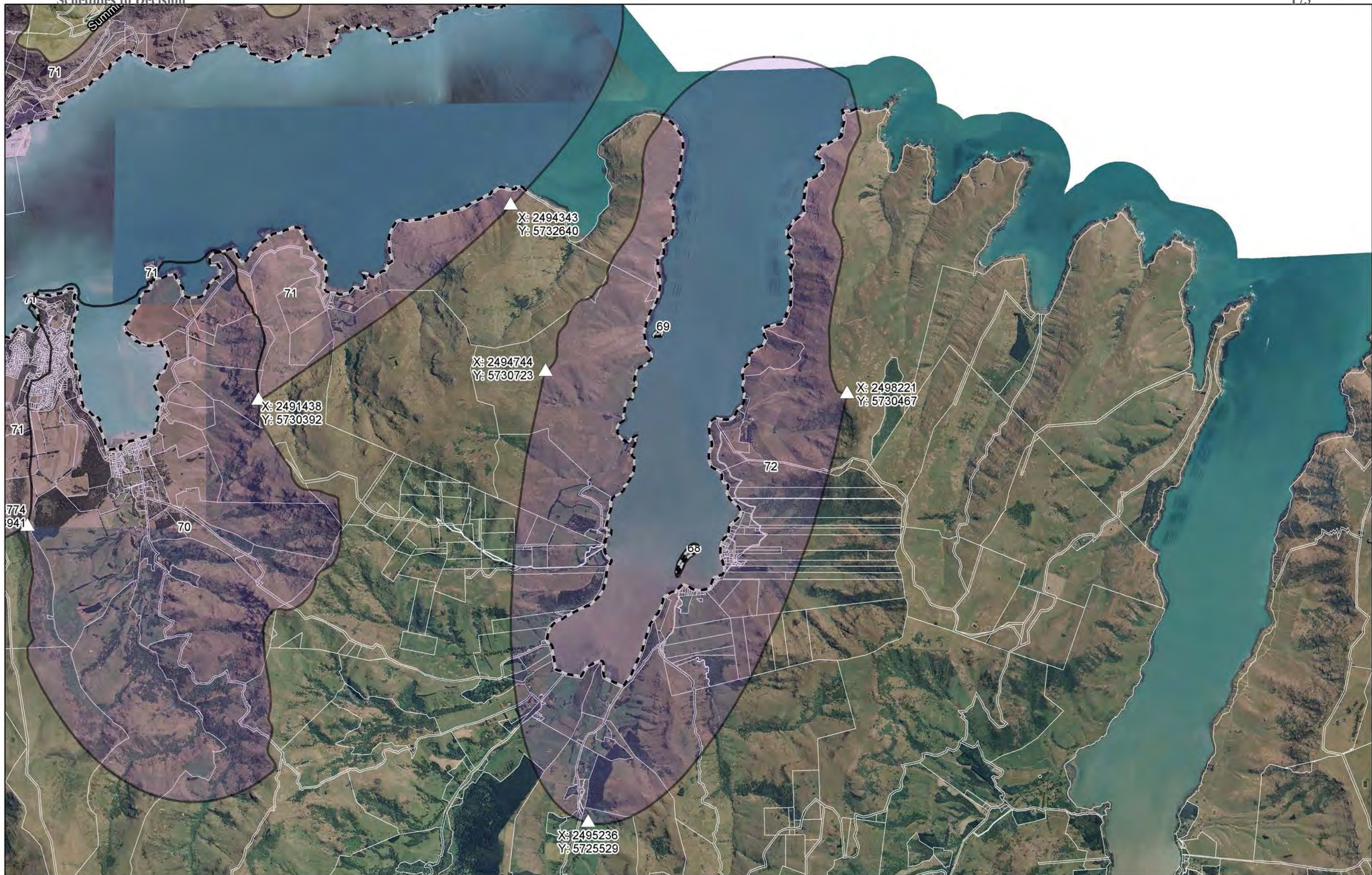
Ngā Tūranga Tūpuna Aerial Map
Site ID71 Whakaraupō - North Western Enlargement

Notes: 1. Additional sites are shown for context purposes only. Refer to the specific aerial map for the detail of each site.









Decision51 Schedule of SoNTCS Batch Plotting.gws













Decision51 Schedule of SoNTCS Batch Plotting.gws



9.5.5.3 - Schedule of Ngā Tūranga Tūpuna

Christchurch District Boundary (indicative only)

Note: The full extent of the sites are shown for information purposes. The District Plan provisions only apply to the portion of the site on the landward side of Mean High Water Springs



Ngā Tūranga Tūpuna Aerial Map Site ID74 Wairewa (Lake Forsyth)

Notes: 1. Additional sites are shown for context purposes only. Refer to the specific aerial map for the detail of each site.



Decision51 Schedule of SoNTEs Batch Plotting gws



9.5.5.3 - Schedule of Ngā Tūranga Tūpuna

Christchurch District Boundary (indicative only)

Note: The full extent of the sites are shown for information purposes. The District Plan provisions only apply to the portion of the site on the landward side of Mean High Water Springs



Ngā Tūranga Tūpuna Aerial Map

Site ID75 Tuawera

Notes: 1. Additional sites are shown for context purposes only. Refer to the specific aerial map for the detail of each site.



Decision51 Schedule of SoNTCS Batch Plotting.gws



9.5.5.3 - Schedule of Ngā Tūranga Tūpuna

Christchurch District Boundary (indicative only)

Note: The full extent of the sites are shown for information purposes. The District Plan provisions only apply to the portion of the site on the landward side of Mean High Water Springs



Ngā Tūranga Tūpuna Aerial Map

Site ID76 Rapanui

Notes: 1. Additional sites are shown for context purposes only. Refer to the specific aerial map for the detail of each site.