

SCHEDULE 6

Aerial Maps for Wāhi Taonga and Wāhi Tapu

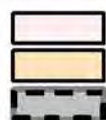


Decision31 Schedule of SoNT CS Batch Plotting gws





Decision51 Schedule of SoNTCS Batch Plotting gws



9.5.5.1 - Schedule of Wāhi Tapu / Wāhi Taonga
9.5.5.2 - Schedule of Mahaanui Iwi Management
Plan Silent Files and Kaitōrete Spit
Christchurch District Boundary (indicative only)
Note: The full extent of the sites are shown for information
purposes. The District Plan provisions only apply to the portion
of the site on the landward side of Mean High Water Springs
Contour line



Wāhi Tapu / Wāhi Taonga Aerial Map Site ID2

Notes: 1. Additional sites are shown for context purposes only. Refer to the specific aerial map for the detail of each site.
2. Some specific Wāhi Tapu (eg Maunga) coincide with general silent file areas. In these situations the relevant provisions to both sites apply.
3. Overlapping Wāhi Tapu / Wāhi Taonga sites will result in a darker shading. At these locations, seek the schedule for information on both sites.
4. NZ Contours (Topo, 1:50k) CC-BY Land Information New Zealand (downloaded 26/10/2016 from <https://data.linz.govt.nz/layer/768-nz-contours-topo-150k/>).



Decision51 Schedule of SoNTEs Batch Plotting.gws

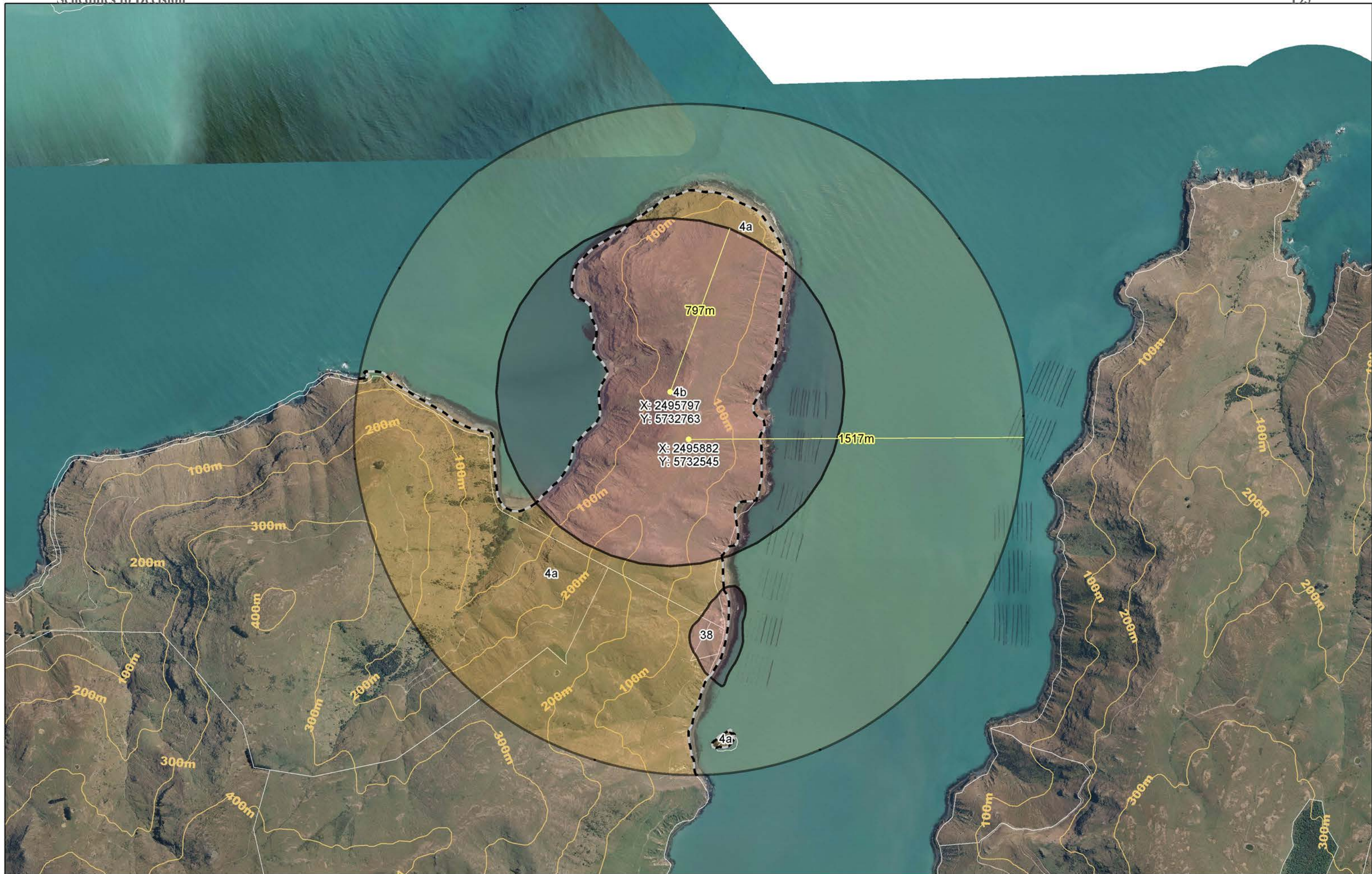


9.5.5.1 - Schedule of Wāhi Tapu / Wāhi Taonga
9.5.5.2 - Schedule of Mahaanui Iwi Management
Plan Silent Files and Kaitōrete Spit
Christchurch District Boundary (indicative only)
Note: The full extent of the sites are shown for information
purposes. The District Plan provisions only apply to the portion
of the site on the landward side of Mean High Water Springs
Contour line

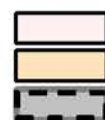


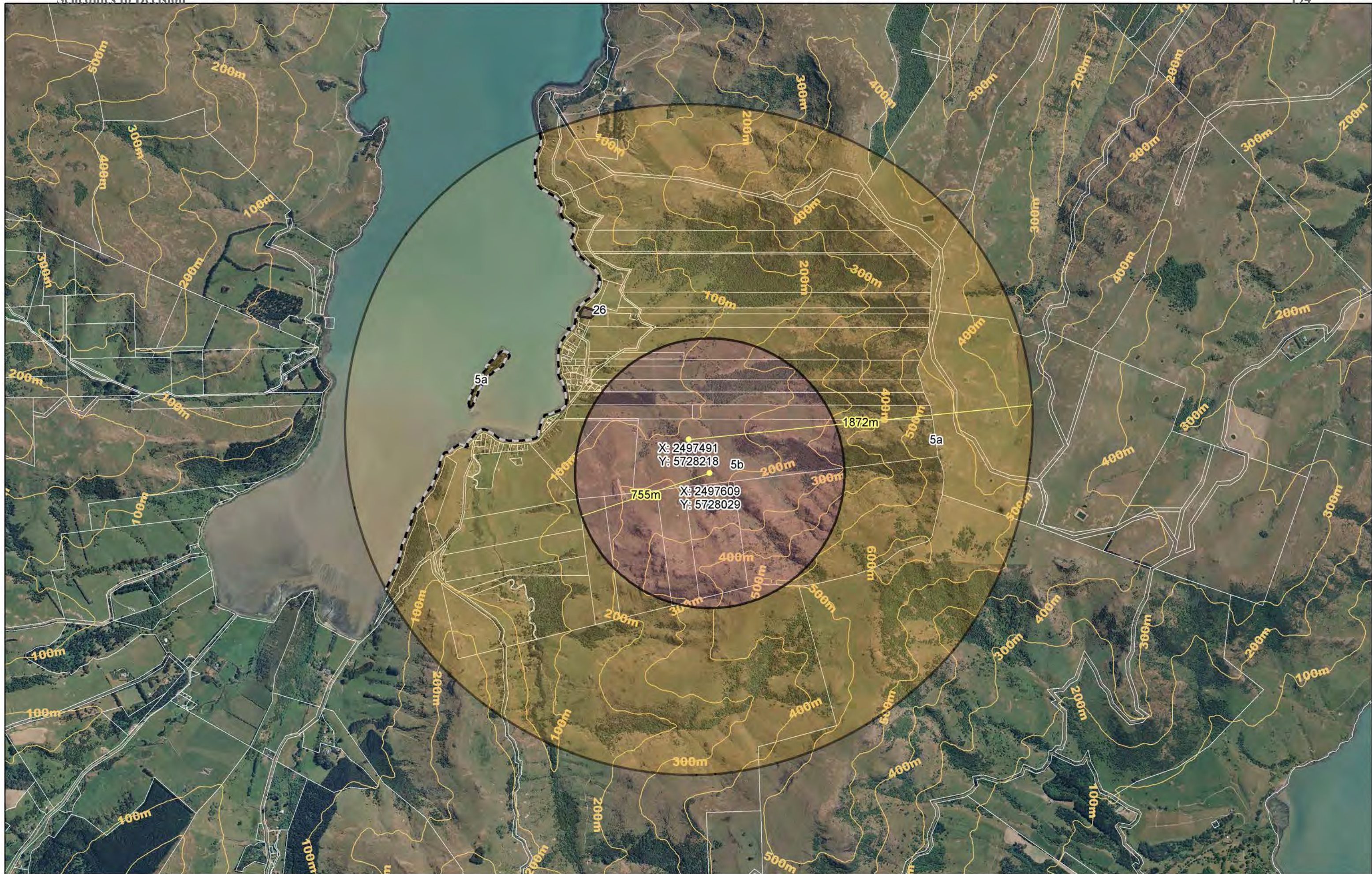
Wāhi Tapu / Wāhi Taonga Aerial Map Site ID3

Notes: 1. Additional sites are shown for context purposes only. Refer to the specific aerial map for the detail of each site.
2. Some specific Wāhi Tapu (eg Maunga) coincide with general silent file areas. In these situations the relevant provisions to both sites apply.
3. Overlapping Wāhi Tapu / Wāhi Taonga sites will result in a darker shading. At these locations, seek the schedule for information on both sites.
4. NZ Contours (Topo, 1:50k) CC-BY Land Information New Zealand (downloaded 26/10/2016 from <https://data.linz.govt.nz/layer/768-nz-contours-topo-150k/>).



Decision51 Schedule of SoNTCS Batch Plotting.gws





Decision51 Schedule of SoNTCS Batch Plotting.gws



9.5.5.1 - Schedule of Wāhi Tapu / Wāhi Taonga
9.5.5.2 - Schedule of Mahaanui Iwi Management
Plan Silent Files and Kaitōrete Spit
Christchurch District Boundary (indicative only)
Note: The full extent of the sites are shown for information
purposes. The District Plan provisions only apply to the portion
of the site on the landward side of Mean High Water Springs
Contour line

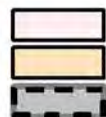


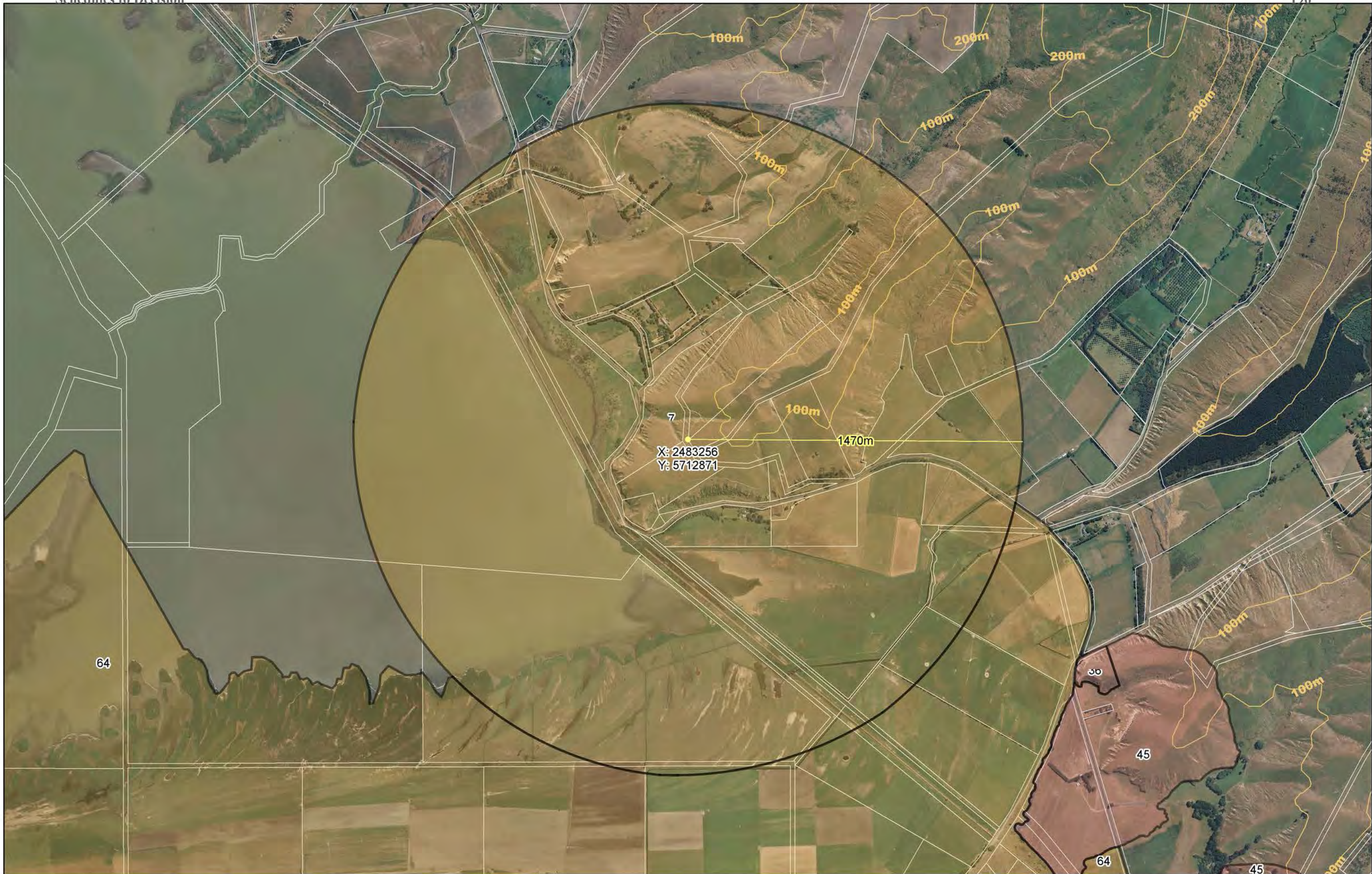
Wāhi Tapu / Wāhi Taonga Aerial Map Site ID5

Notes: 1. Additional sites are shown for context purposes only. Refer to the specific aerial map for the detail of each site.
2. Some specific Wāhi Tapu (eg Maunga) coincide with general silent file areas. In these situations the relevant provisions to both sites apply.
3. Overlapping Wāhi Tapu / Wāhi Taonga sites will result in a darker shading. At these locations, seek the schedule for information on both sites.
4. NZ Contours (Topo, 1:50k) CC-BY Land Information New Zealand (downloaded 26/10/2016 from <https://data.linz.govt.nz/layer/768-nz-contours-topo-150k/>).



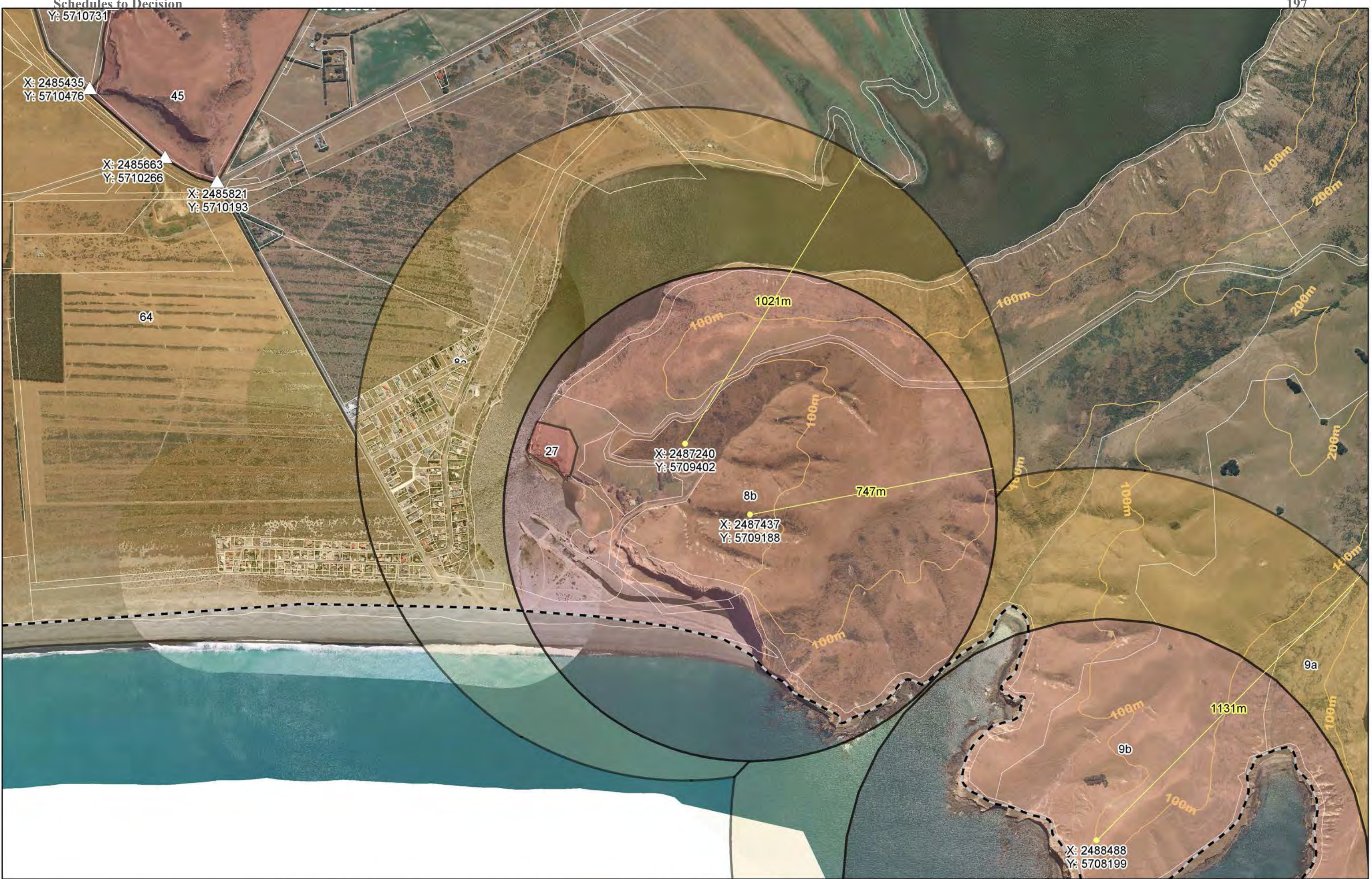
Decision51 Schedule of SoNTCS Batch Plotting.gws

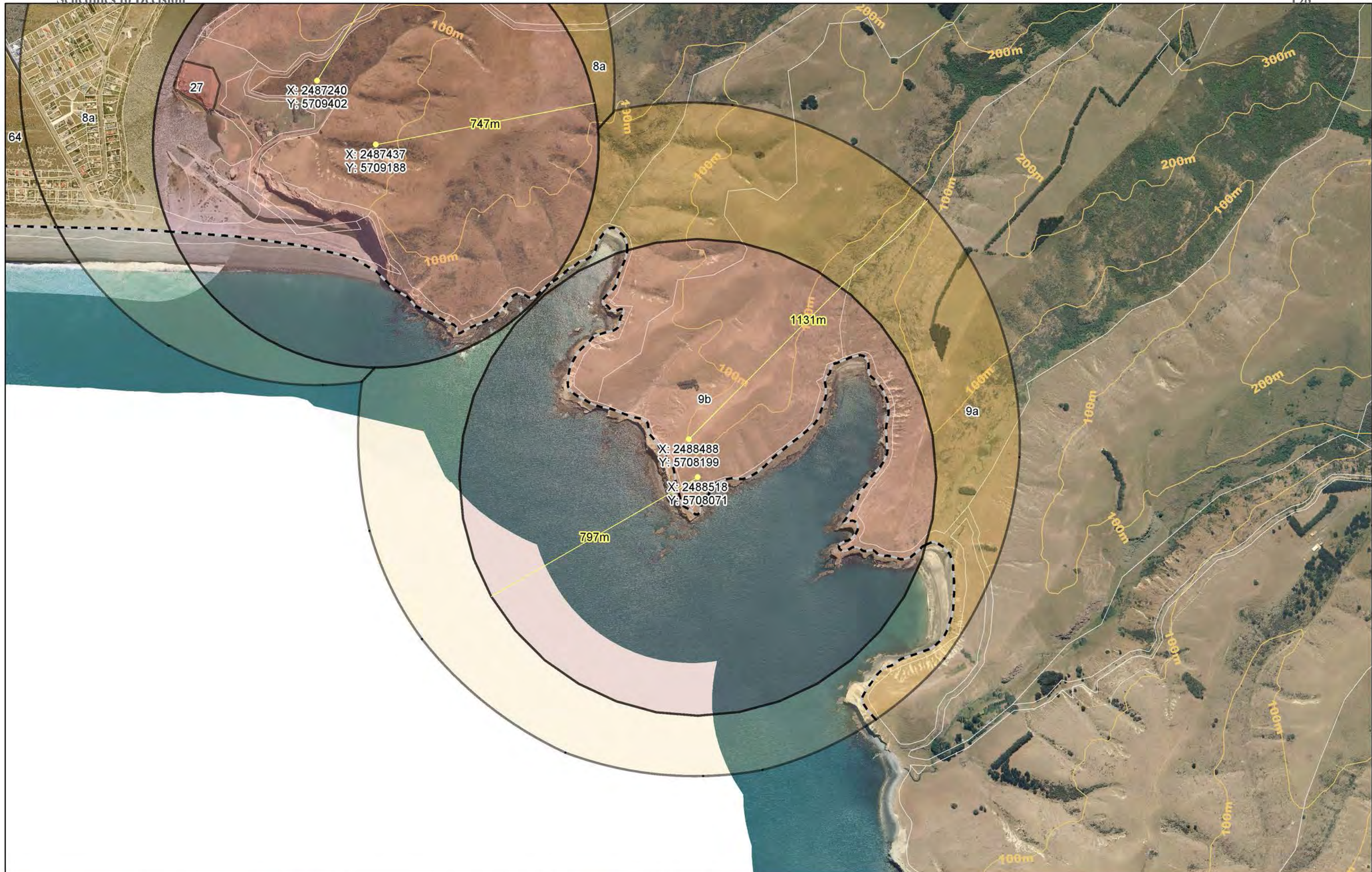




Decision51 Schedule of SoNTCS Batch Plotting.gws





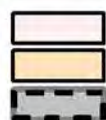


Decision51 Schedule of SoNTCS Batch Plotting.gws



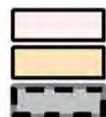


Decision51 Schedule of SoNTCS Batch Plotting gws



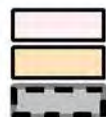


Decision51 Schedule of SoNTCS Batch Plotting.gws



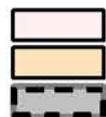


Decision51 Schedule of SoNTCS Batch Plotting.gws





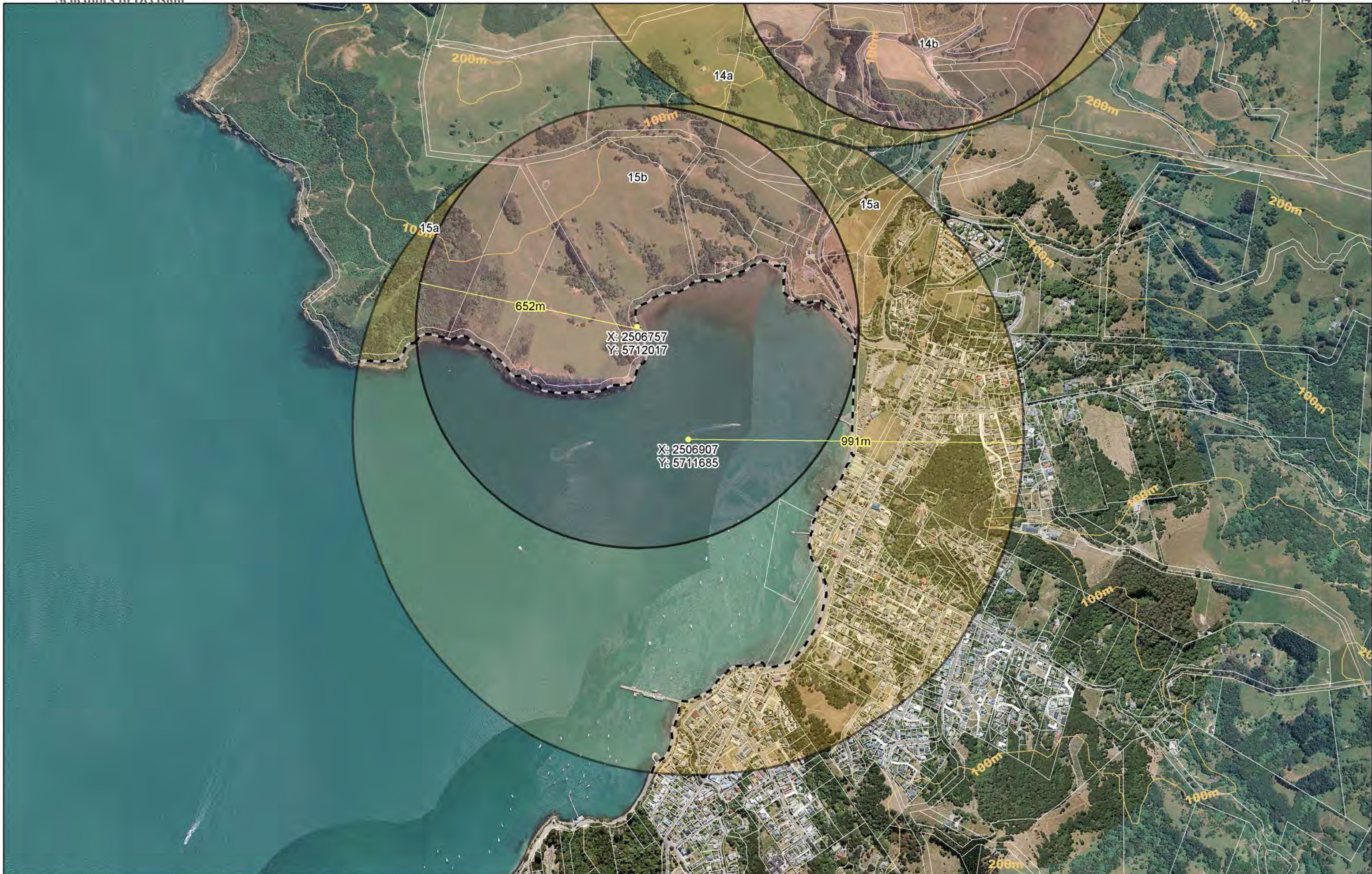
Decision51 Schedule of SoNTCS Batch Plotting.gws



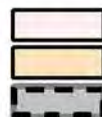


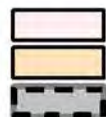
Decision51 Schedule of SoNTCS Batch Plotting gws

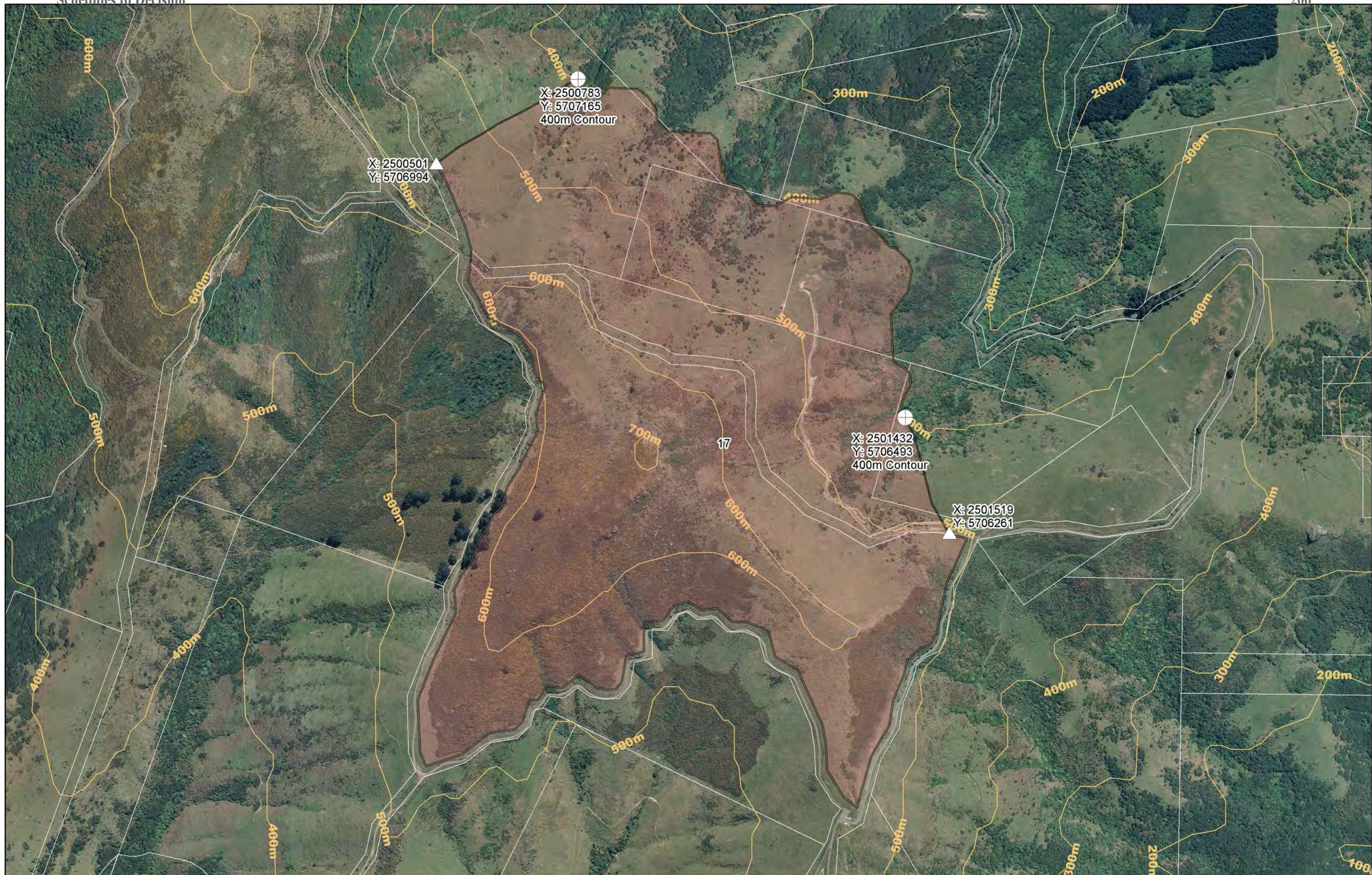




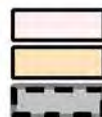
Decision51 Schedule of SoNTCS Batch Plotting.gws







Decision51 Schedule of SoNTCS Batch Plotting.gws





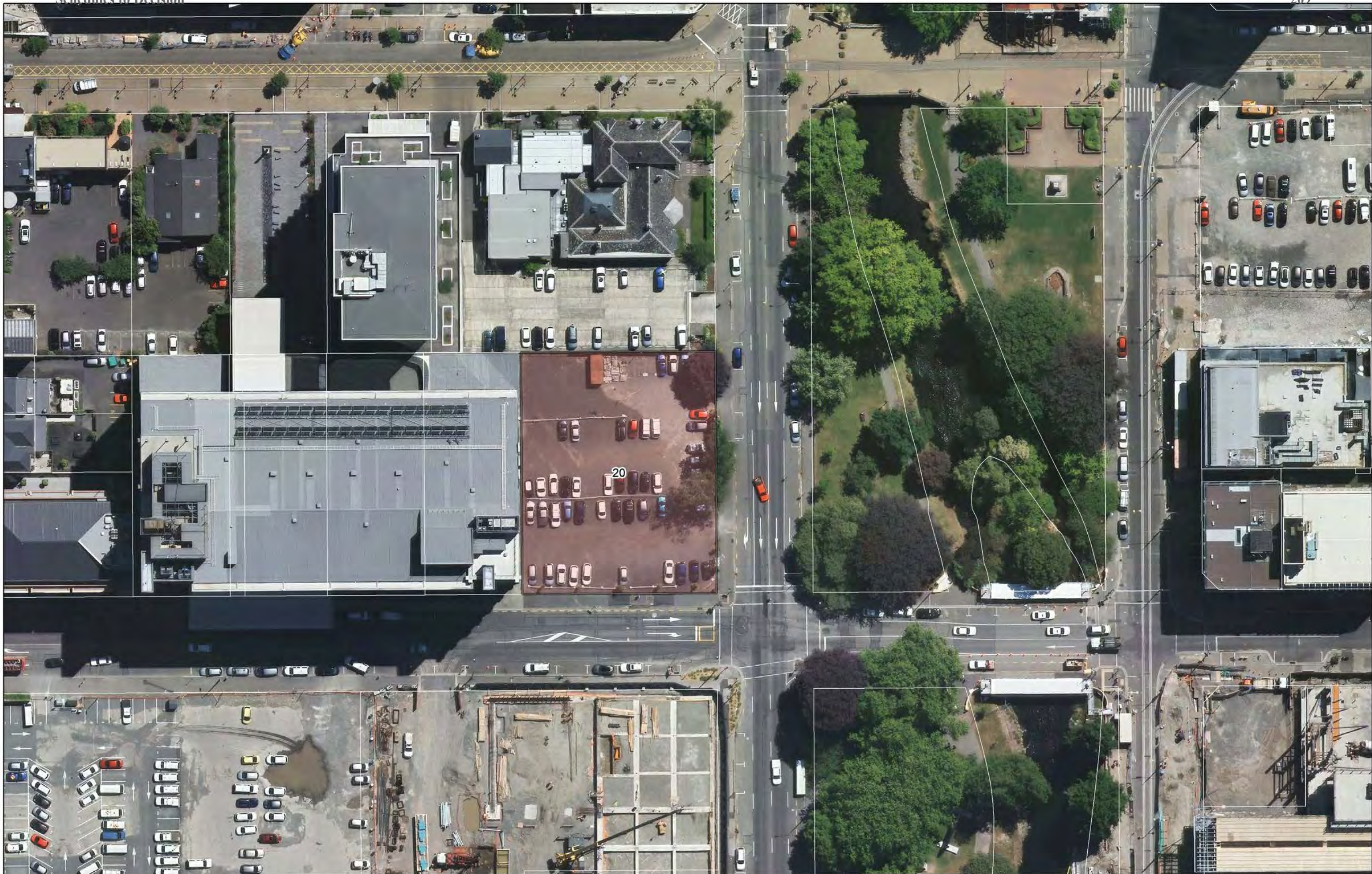
Decision51 Schedule of SoNTCS Batch Plotting.gws





Decision51 Schedule of SoNTCS Batch Plotting.gws





Decision51 Schedule of SoNTCS Batch Plotting.gws



9.5.5.1 - Schedule of Wāhi Tapu / Wāhi Taonga
9.5.5.2 - Schedule of Mahaanui Iwi Management
Plan Silent Files and Kaitōrete Spit
Christchurch District Boundary (indicative only)
Note: The full extent of the sites are shown for information
purposes. The District Plan provisions only apply to the portion
of the site on the landward side of Mean High Water Springs
Contour line



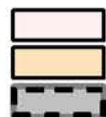
Wāhi Tapu / Wāhi Taonga Aerial Map

Site ID20 Puāri Pā Urupā

Notes: 1. Additional sites are shown for context purposes only. Refer to the specific aerial map for the detail of each site.
2. Some specific Wāhi Tapu (eg Maunga) coincide with general silent file areas. In these situations the relevant provisions to both sites apply.
3. Overlapping Wāhi Tapu / Wāhi Taonga sites will result in a darker shading. At these locations, seek the schedule for information on both sites.
4. NZ Contours (Topo, 1:50k) CC-BY Land Information New Zealand (downloaded 26/10/2016 from <https://data.linz.govt.nz/layer/768-nz-contours-topo-150k/>).

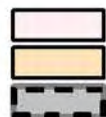


Decision51 Schedule of SoNTCS Batch Plotting.gws





Decision51 Schedule of SoNTCS Batch Plotting.gws



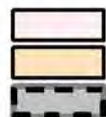


Decision51 Schedule of SoNTCS Batch Plotting.gws





Decision31 Schedule of SoNT CS Batch Plotting gws





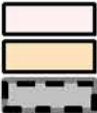
25

Decision51 Schedule of SoNTCS Batch Plotting.gws





Decision51 Schedule of SoNTCS Batch Plotting.gws



9.5.5.1 - Schedule of Wāhi Tapu / Wāhi Taonga
9.5.5.2 - Schedule of Mahaanui Iwi Management
Plan Silent Files and Kaitōrete Spit
Christchurch District Boundary (indicative only)
Note: The full extent of the sites are shown for information
purposes. The District Plan provisions only apply to the portion
of the site on the landward side of Mean High Water Springs
Contour line



Wāhi Tapu / Wāhi Taonga Aerial Map

Site ID26 Te Whare Karakia Ki Puāri

Notes: 1. Additional sites are shown for context purposes only. Refer to the specific aerial map for the detail of each site.
2. Some specific Wāhi Tapu (eg Maunga) coincide with general silent file areas. In these situations the relevant provisions to both sites apply.
3. Overlapping Wāhi Tapu / Wāhi Taonga sites will result in a darker shading. At these locations, seek the schedule for information on both sites.
4. NZ Contours (Topo, 1:50k) CC-BY Land Information New Zealand (downloaded 26/10/2016 from <https://data.linz.govt.nz/layer/768-nz-contours-topo-150k/>).

8a

27

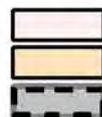
8b

Decision31 Schedule of Sites CS Batch Plotting.gws



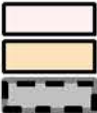


Decision51 Schedule of SoNTCS Batch Plotting.gws





Decision51 Schedule of SoNTCS Batch Plotting.gws



9.5.5.1 - Schedule of Wāhi Tapu / Wāhi Taonga
9.5.5.2 - Schedule of Mahaanui Iwi Management
Plan Silent Files and Kaitōrete Spit
Christchurch District Boundary (indicative only)
Note: The full extent of the sites are shown for information
purposes. The District Plan provisions only apply to the portion
of the site on the landward side of Mean High Water Springs
Contour line



Wāhi Tapu / Wāhi Taonga Aerial Map Site ID29 Ripapa Island (Taununu Pa)

Notes: 1. Additional sites are shown for context purposes only. Refer to the specific aerial map for the detail of each site.
2. Some specific Wāhi Tapu (eg Maunga) coincide with general silent file areas. In these situations the relevant provisions to both sites apply.
3. Overlapping Wāhi Tapu / Wāhi Taonga sites will result in a darker shading. At these locations, seek the schedule for information on both sites.
4. NZ Contours (Topo, 1:50k) CC-BY Land Information New Zealand (downloaded 26/10/2016 from <https://data.linz.govt.nz/layer/768-nz-contours-topo-150k/>).

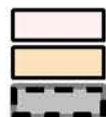


Decision 51 Schedule of SoNT CS Batch Plotting gws





Decision51 Schedule of SoNTCS Batch Plotting.gws





Decision51 Schedule of SoNTCS Batch Plotting.gws



X: 2518360
Y: 5722933

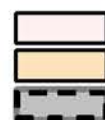
33

X: 2518431
Y: 5722820

X: 2518487
Y: 5722787

X: 2518549
Y: 5722789

X: 2518647
Y: 5722845



9.5.5.1 - Schedule of Wāhi Tapu / Wāhi Taonga
9.5.5.2 - Schedule of Mahaanui Iwi Management Plan Silent Files and Kaitōrete Spit
Christchurch District Boundary (indicative only)
Note: The full extent of the sites are shown for information purposes. The District Plan provisions only apply to the portion of the site on the landward side of Mean High Water Springs Contour line



Wāhi Tapu / Wāhi Taonga Aerial Map

Site ID33 Pā Bay Pā

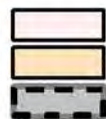
Notes: 1. Additional sites are shown for context purposes only. Refer to the specific aerial map for the detail of each site.
2. Some specific Wāhi Tapu (eg Maunga) coincide with general silent file areas. In these situations the relevant provisions to both sites apply.
3. Overlapping Wāhi Tapu / Wāhi Taonga sites will result in a darker shading. At these locations, seek the schedule for information on both sites.
4. NZ Contours (Topo, 1:50k) CC-BY Land Information New Zealand (downloaded 26/10/2016 from <https://data.linz.govt.nz/layer/768-nz-contours-topo-150k/>).

Decision51 Schedule of SoNTCS Batch Plotting.gws





Decision51 Schedule of SoNTCS Batch Plotting.gws



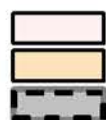


Decision51 Schedule of SoNTCS Batch Plotting.gws



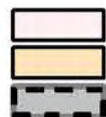


Decision51 Schedule of SoNTCS Batch Plotting.gws



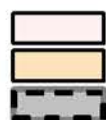


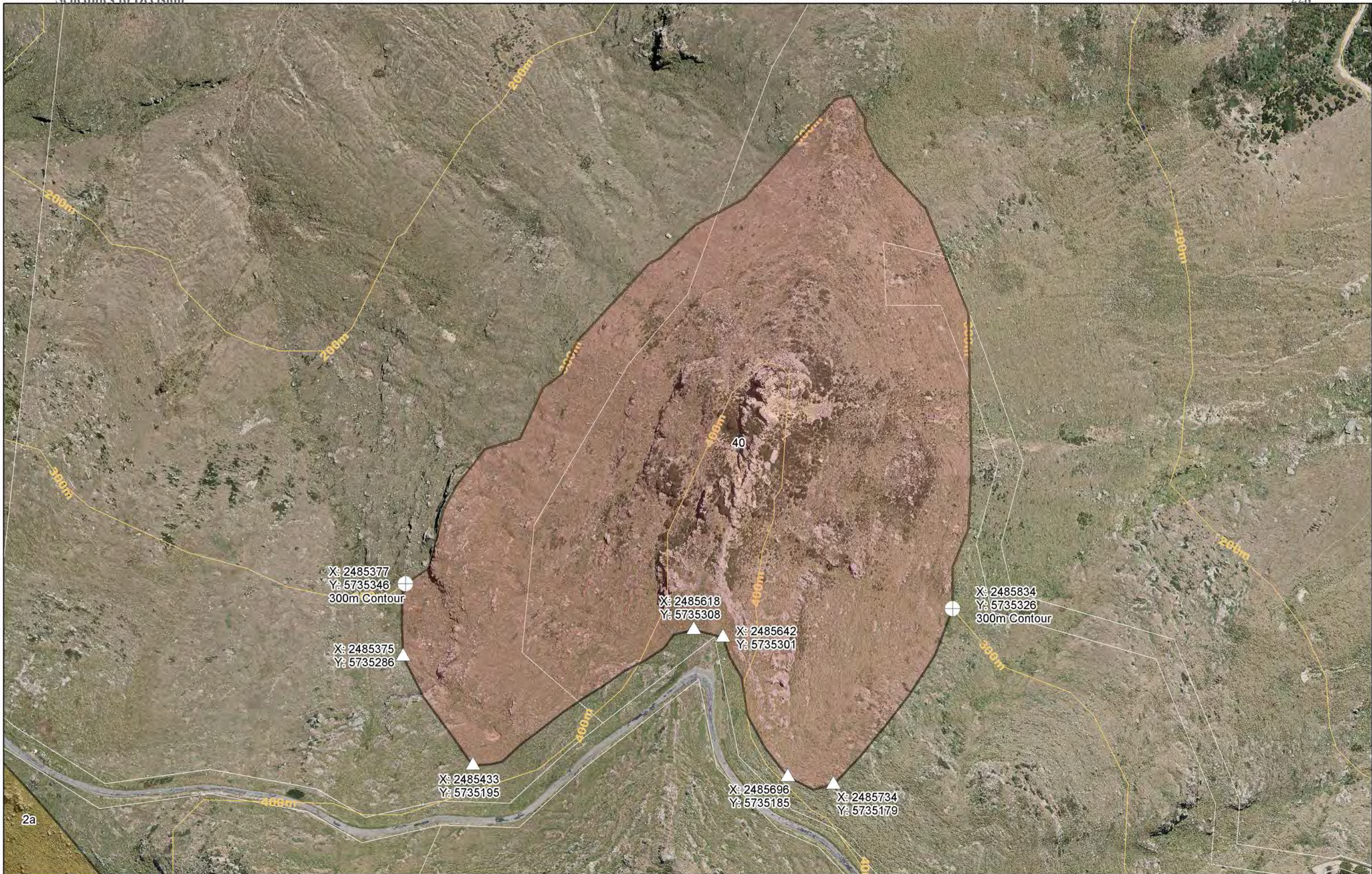
Decision51 Schedule of SoNTCS Batch Plotting.gws



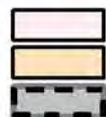


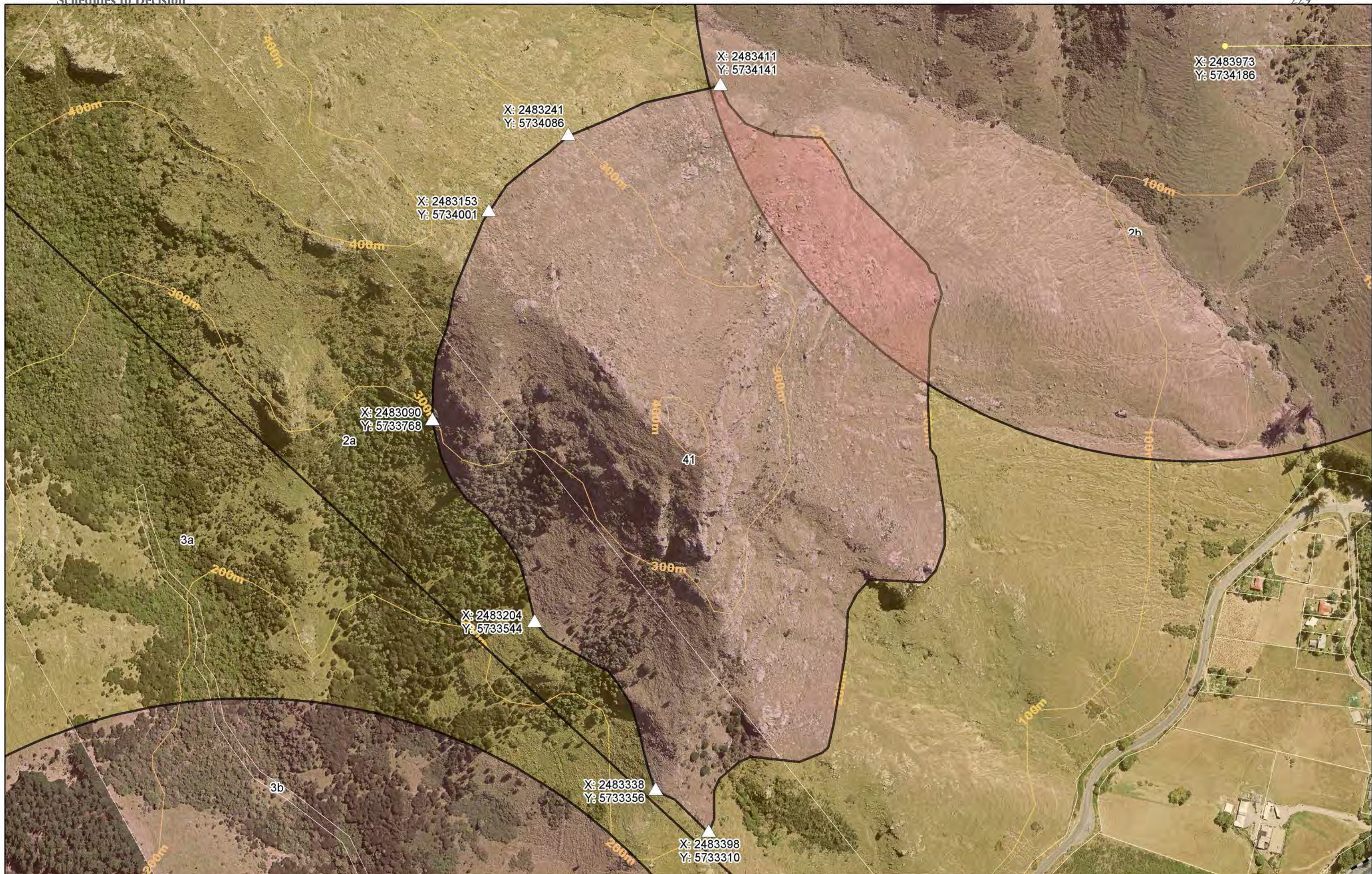
Decision51 Schedule of SoNTCS Batch Plotting.gws



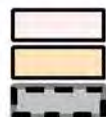


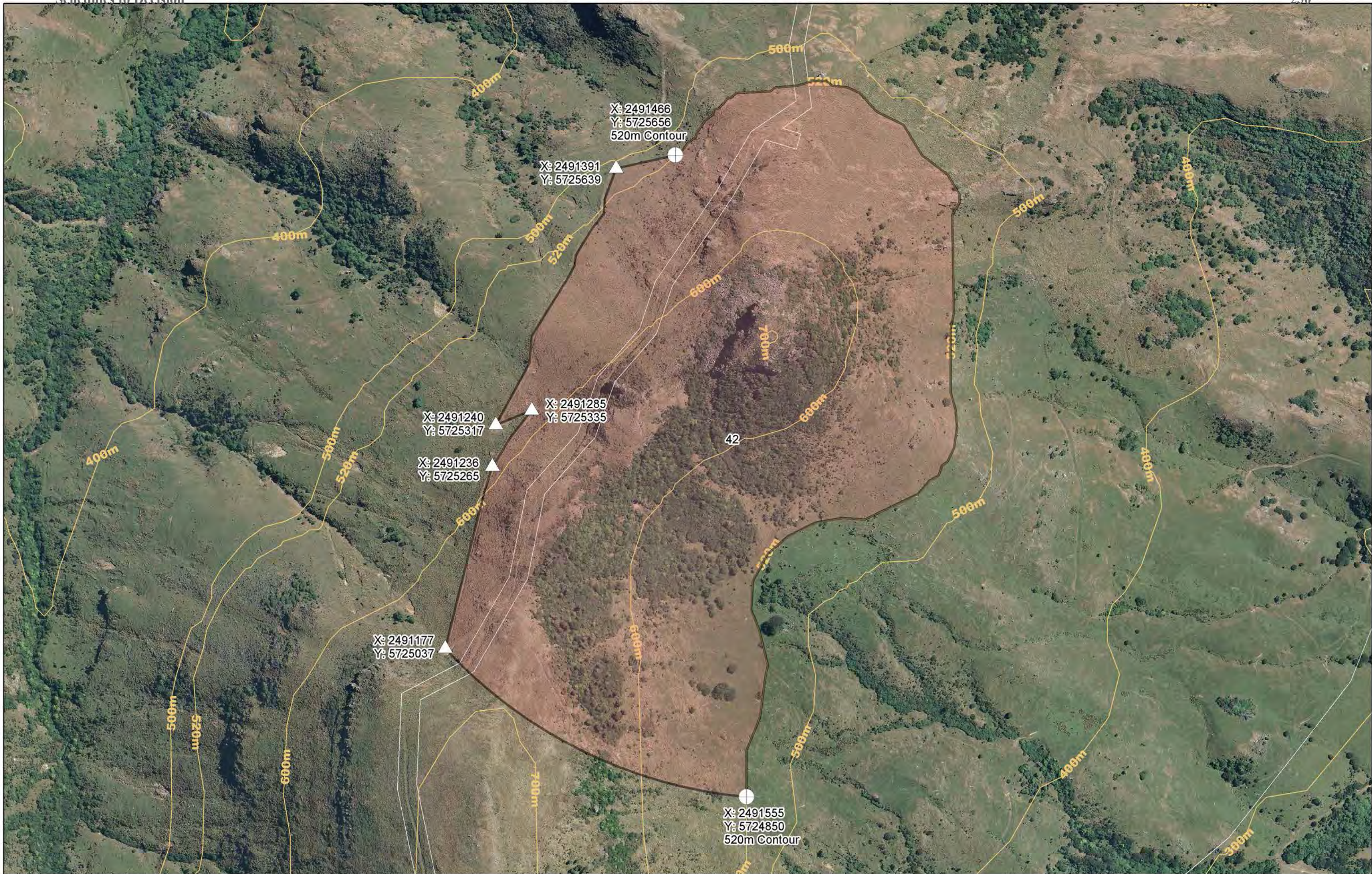
Decision51 Schedule of SoNT CS Batch Plotting gws



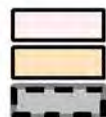


Decision51 Schedule of SoNTCS Batch Plotting.gws



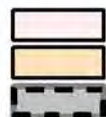


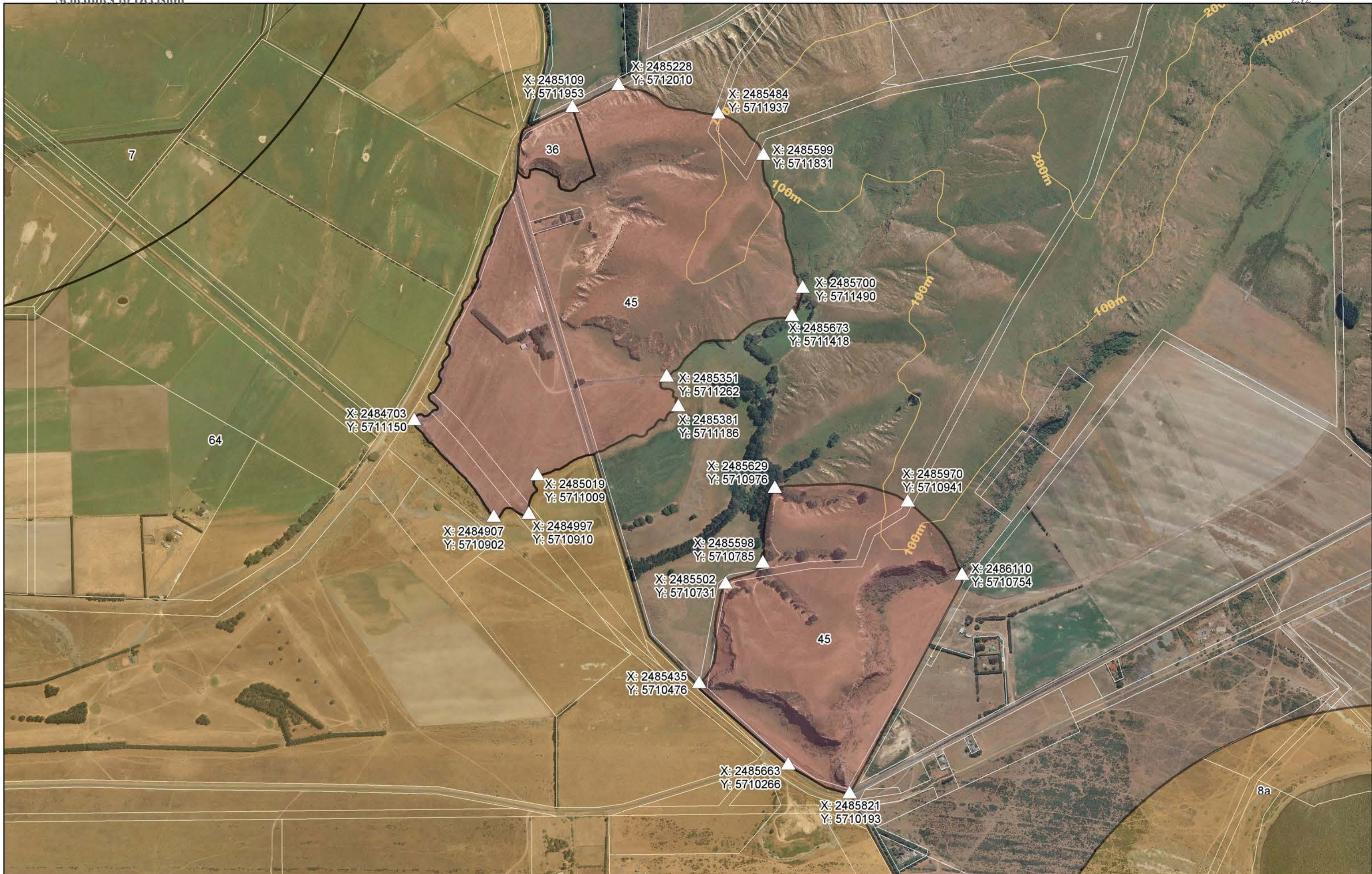
Decision51 Schedule of SoNTCS Batch Plotting gws



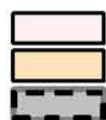


Decision31 Schedule of SoNTCS Batch Plotting gws





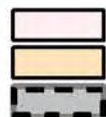
Decision51 Schedule of SoNTCS Batch Plotting.gws







Decision51 Schedule of SoNTCS Batch Plotting.gws





Decision51 Schedule of SoNTCS Batch Plotting.gws

